

## Strengthening Politics Through the Community Process

Patcharee Klommeung

*Ban Na Sub-District, Ban Na District, Nakhon Nayok Province*

**Key words:** Community process, participation, strong community, strengthening, internationally

**Abstract:** Research on strengthening politics through the community process, Ban Na sub-district, Ban Na district, Nakhon Nayok province. The objective is to study political strength factors affecting the political strength of the community and of the model of political strengthening through the community process, Ban Na sub-district, Ban Na district, Nakhon Nayok province. This research is a qualitative research by studying documents both domestically and internationally. Interviews with key informants are community leaders, people who comment on the community forum. Then use the qualitative data obtained from data collection analyzed by inductive interpretation and logical analysis, then use the descriptive results of data analysis. The political strength of Ban Na sub-district community, Ban Na district, Nakhon Nayok province consists of participation in decisions giving people the opportunity to participate in the decision to make community plans through the community process to meet the needs of the community. Participation in operations give people the opportunity to participate in activities or activities as planned by the community together or those activities in order to achieve the objectives set. The participation of beneficiaries is that people have participated. In receiving various benefits from implementing community plans or community development activities and participation in evaluation in which the people have participated in the expression of opinions through the community forum for information in the evaluation. In addition, the public has been a part in providing facts and opinions as a feedback to the operation of various projects organized by the community. For the reason that the activities are held to meet the needs and to solve community problems people should therefore be part of the opinion about community development actions as information for evaluation. Factors affecting the political strength of the community of Ban Na sub-district, Ban Na district, Nakhon Nayok province are consciousness in the community found that

**Corresponding Author:**

Patcharee Klommeung

*Ban Na sub-district, Ban Na district, Nakhon Nayok province*

Page No.: 135-141

Volume: 15, Issue 3, 2020

ISSN: 1818-5800

The Social Science

Copy Right: Medwell Publications

people are aware that they are community owners with an intention to participate in taking responsibility for problems with other people equally, accept each other's potential and accept various differences between members, participate in solving community problems together. The organizational structure of the community found that people gather together under common needs or problems which are very important for driving in the area. Community networks found that people in the community exchanged news, information or activities together as well as creating a network of joint learning which will lead to the power to connect communities to be strong. The model of political strengthening through the community

process of Ban Na sub-district, Ban Na district, Nakhon Nayok province consists of strengthening of morality, creating collaborative learning, creating joint management which must start from the development of human quality to be knowledgeable and moral have a public awareness and be aware of changes to lead to a strong community development help each other in the community and strengthening the community to include strong examples to think together to learn into action. There is a learning process and knowledge management in various forms according to the geography of society that is suitable for the life based on resources, wisdom and way of community culture.

---

## INTRODUCTION

The participation of people in the Thai democracy towards local government is still considered at a low level such as participation in the development plan to give opinions on the work of the local government organization to control and monitor the operation results. It may be that the people who didn't participate because local administrators do not give importance to political participation of the people and the people still lack knowledge and understanding about local government or people have the same political attitude by looking at political activities as a matter of leaders unrelated to themselves, therefore do not come into play or political participation as should. The process of political participation of people in the community is considered the most important factor in managing community problems. People in the community have the same goal to solve problems. Since, joining together do and share benefits. Therefore, cooperate and work together to solve problems and develop your own community to be self-reliant, leading to a strong community to manage themselves. In the case of people participating in the community forum of Ban Na Sub-district, Ban Na district, Nakhon Nayok Province shows that people want to solve problems for the community in the determination of various successful activities are activities that are formed from the integration of villagers with the same objectives is to strengthen the community to be self-reliant and while the people in the community create participation government officials have a duty to support as a support. The principles of community participation can be summarized as follows: opening the forum to listen to the opinions of the people in the community is creating opportunities for the community to participate in providing factual information of the community. The learning process together helps to think, help each other to solve problems, trial and error in the community themselves, freedom to think. Creating the people in the community with the same goal in solving problems.

Follow the agreement that is shared in the community in the same direction. After the implementation of the results or problems that come up to discuss and resolve the problems together to get what is best for community practice.

From the above, the researcher therefore studied the strengthening of politics through the process of community development in Ban Na sub district, Ban Na district, Nakhon Nayok province. To study the strength of the community, factors that affect the political strength of the community and study the forms of political strengthening through the community process. Which can be used as basic information to improve work and increase capacity for communities to become more involved lead to strong communities.

### Research objectives:

- To study the political strength of the Ban Na sub-district community, Ban Na district, Nakhon Nayok province
- To study the factors affecting the political strength of the community of Ban Na sub-district, Ban Na district, Nakhon Nayok province

To study the model of political strengthening through the community process of Ban Na sub-district, Ban Na district, Nakhon Nayok province.

## MATERIALS AND METHODS

Strengthening politics through the community process, Ban Na sub-district, Ban Na district, Nakhon Nayok province is a qualitative research. The researcher conducted the research by specifying the research methodology. In each issue as follows (Fig. 1).

**Population, key informant and target area:** The key informants of this time are the community leaders, the people who have expressed their opinions in the community forum, totaling 40 people. The target area is Ban Na sub-district, Ban Na district, Nakhon Nayok province.

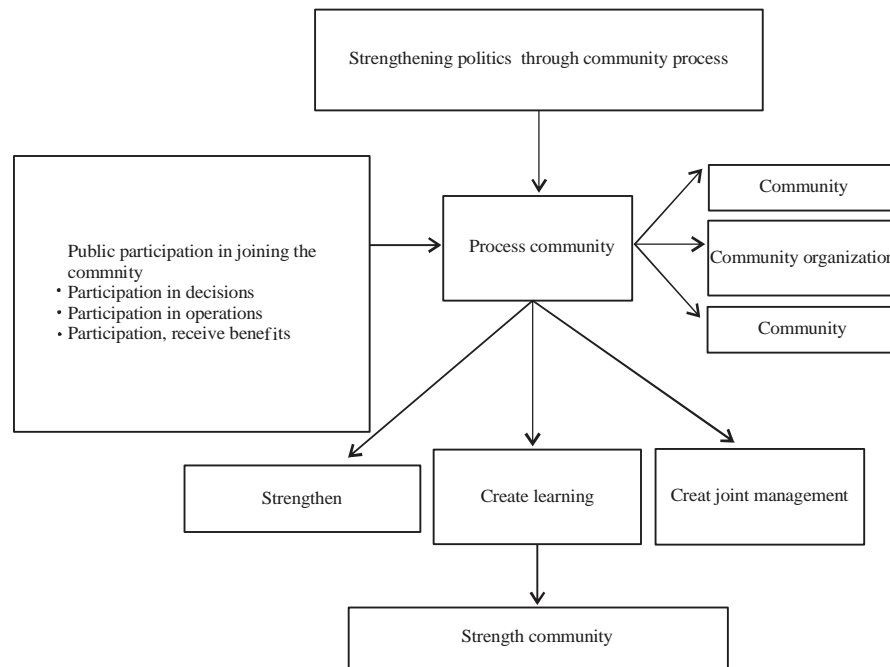


Fig. 1: Conceptual framework of research

**Research tools:** This research is qualitative research in which the researcher developed himself by studying various documents related to public participation community. In this research, various methods of data collection were used include study from various documents related participation observation and non participation observation field notes focus group discussion organizing a forum to exchange knowledge 6 interview guideline. Consists of questions in the group discussion.

## RESULTS AND DISCUSSION

From interviews with community leaders and the people who participate in the community forum can be summarized as follows. The political strength of Ban Na community, Ban Na district, Nakhon Nayok province with details as follows.

**Participation in decision making.** It is found that the people participating in decision making in the formulation of the plan consist of 1 setting up a community forum Defining plans and projects can conclude that people participation in decision making in formulating plans for people in the community of Ban Na sub-district, Ban Na district, Nakhon Nayok province have a part in coming to expressing opinions, arranging a community forum for people in the community to come to express their opinions and needs is a forum for open information disclosure. There is no concealment, both the stakeholder and the stakeholder parties of the project must have an

acceptable composition of the attendees and there are clear criteria and issues to consider. Public participation in making the people to decide the issue by appointing people who are affected by the problem. It is the committee with decision-making power in which citizens are involved in activities and projects from planning and collaborating to search for needs. Participation in the operation found that the people participated in the operation by implementing the plan, consisting of organizing projects and activities, public relations and coordination can conclude that public participation in the practice is support in screening and categorizing to meet the needs of the people. In which the people are involved in the research process according to the activity plan and projects for effective implementation. Ban Na sub-district has a plan for activities and projects to determine budgets for various projects. And also supporting various project activities every sector is involved in the implementation of the plan.

**Participation in receiving benefits.** It was found that people participated in receiving material benefits, social and personal benefits. For example, participating in the development of one's potential through co-making of community plans, participate and receive benefits from the implementation of community plans. And participate in finding solutions to problems from community planning in which the people in the community are involved in thinking jointly formulate guidelines and joint development activities by adhering to the principles of self-sufficiency reduce external dependency by mainly

considering the potential of resources, wisdom, way of life, culture and the local environment performed by the community and for the community benefit. Participation in the evaluation showed that the people participating in the monitoring and evaluation consisted of setting up a follow-up committee assessing the operations and Monitoring the project can conclude that participation in monitoring and evaluation by selection of public leaders focus on participation to follow up to support the operating results and for the success of the job and a committee to monitor and evaluate development plans and people to participate in the process of evaluation and monitoring in various projects what problems or obstacles will support or solve during the implementation of the evaluation committee should be appointed by the people to participate in the committee as well. Factors affecting the political strength of the community of Ban Na sub-district, Ban Na district, Nakhon Nayok province. Community consciousness found that people in the community are conscious that they are the owners of the community problems and with the intention to participate in responsibility and to solve problems with various parties, accept to assemble and opinions equally with friendship to learn together or to solve problems that they face by giving importance to the potential of the individual in the community acknowledging and appreciating the diversity of community members in working together. Participation in community problem solving activities is a catalyst for community awareness. By creating and instilling awareness among the people in the community as follows building awareness building awareness in issues that require awareness identification, importance and need to be aware stimulation of thinking persuading to acceptance induction a invitation to be publicized emphasizing continuity in ideas and practices strengthening consciousness. In which these things require a person mechanism and communication is the driving force from the beginning to achieving the objectives and goals of creating community awareness. Community organization structure shows that people in the community are gathered together to do various activities. Of the community by itself there is a forum for exchanging discussions about information. Such as solving problems in the community development planning Defining mutual agreements by the participation of people who have the same objectives or interests. There is a management system to enable learning together in practice and lead to problem solving according to situations or problem situations that arise.

Community networks found that people in communities, groups, public and private organizations gather together to connect. Build relationships, weave, create activities based on generosity. The power to work to achieve the goal of strengthening the community. Community networks are the most important factor in

promoting sustainable development. This is because network members play an important role in achieving their goals by using the mechanism of communication, exchange of information and experience. There is cooperation in various matters and also helps to have better bargaining power with various powers. Network coherence is a link to each other as a network. It is not just a group of members who share their interests at the same level as just meeting, exchanging ideas or socializing together. It having to develop to the level of joint activities having organized groups that are both structured and functional will make the group trusted in the community and society including other groups as well. When the group can expand the activities to a large extent will develop from a small grouping combination eventually becoming a large group in the network which makes those groups and networks more negotiable in the community and can use the power of the group to drive community development work related to local management and resources. The model of political strengthening through the community process of Ban Na Sub-district, Ban Na district, Nakhon Nayok province regarding the strengthening of virtues, it was found that the strengthening of virtue in the community was not based on the lack of morals at all but it is a revival and upgrade of morality from the former people in the community may neglect or neglect some dimensions by experimenting with new practices that are against ethics which may be with mental weakness or ignorance to the point of not being able to resist the penetration of new concepts from the outside that are full of discourses that are beautiful and suitable for the age. When the implementation of the new guidelines began to produce undesirable results and has a tendency to expand negatively until it is difficult to escape if not finding a new solution again but a new solution that is suitable for the context of a community that comes from outside is often not easy to find in a situation where people in the community themselves do not develop new knowledge as they should. Returning to the old ways of life and the familiar dimensions of goodness including thinking of solutions from the existing environment, leading to efforts to restore actions based on neglected goodness. While also raising the level of connection with new concepts some are complementary, resulting in a lifestyle change that emphasizes morality as an attempt to drive people in the community in a process.

In collaborative learning, it was found that collaborative learning among people in the community including the exchange of knowledge, experiences of people in the community and learning new things from outside the community makes it possible to summarize lessons, create new lessons, receive new knowledge at the same time and have the same understanding. And also stimulates community members to stay alert and lead to

joint community development decisions. Aside from the community learning together, the learning links of the people in the community must be operated in a network manner because it makes the learning system of the community more effective and expanding to create a learning network with other communities make the community more powerful or potential, resulting in a wider exchange of knowledge into more new knowledge reconciliation between communities leads to more effective community development.

Regarding creating joint management, it is found that the community has a management process have the ability to try to allocate human and material resources, so that, they can work together in an orderly and efficient manner to achieve the objectives of the community and in accordance with the needs of the community as much as possible. Community-based management of process- oriented processes starting from planning action Inspection, evaluation and improvement. To encourage members of the community to be a center of development, emphasizing the participation of members giving importance to self- reliance and leading to the strength of a sustainable community.

Therefore, based on research subject: strengthening politics through the community process of Ban Na sub-district, Ban Na district, Nakhon Nayok province can be summarized as follows. From the objective 1, the political strength of the community of Ban Na sub-district, Ban Na district, Nakhon Nayok province as follows (Fig. 2).

Participation in decision making. It is found that the people are involved in the decision making of the community plan. Participation of citizens through the community process in determining resource use. Sources of resources to be used in community development project activities in which the people participated in community development activities which is a group of stakeholders in the development of one's own community. Therefore, the participation of the people or the people who have the duty to develop the community. With regard to participation, decisions are desirable, so that, the actions or development of the community meet the needs of the people in the community as much as possible. In accordance with Burikun<sup>[1]</sup>, said that the participation of people in making decisions that is needed by the community. If getting involved in the formulation of that community plan, it will be most effective. Causing the feeling of belonging to the majority of citizens, agreed that Is an important thing that can lead people to join to develop more community activities because they are co-local owners.

**Participation in the operation:** It is found that the people participate in the activities or the implementation

of the plan specified by the community together or that activity in order to achieve the objectives as planned by supporting assets, equipment and labor or participating in administrative management, coordination and requesting external assistance for community development activities. Which is in line with Naphisratchawan *et al.*<sup>[2]</sup> that participation in the process is a systematic consideration process of the community. In bringing resources from inside and outside the community participate in community development activities with the goal of increasing the capacity of communities to be self-reliant.

Participation in receiving benefits It is found that people have participated in receiving benefits from various development project activities that occur in the community that the activities that are related to the development of the community that people are part of receiving benefits from the activities. Consistent with Weerayangkun<sup>[3]</sup> said that the process in which people are involved in receiving various benefits from implementing community plans or community development activities.

Participation in the evaluation shows that people have participated in the expression through the community forum for information in the evaluation. In addition, the public has been a part in providing facts and opinions as a feedback to the operation of various projects, organized by the community because the activities are held to meet the needs and to solve community problems people should therefore be part of the opinion about community development actions as information for evaluation. Which is consistent with Weerayangkun<sup>[3]</sup> said that the process that people have to participate in the evaluation. The potential for community development and monitoring of all activities it represents adaptation in participation and further development activities. From the second objective, factors affecting the political strength of the Ban Na sub-district community, Ban Na district, Nakhon Nayok province are consciousness in the community found that people are aware that they are community owners with an intention to participate in taking responsibility for problems with other people equally, accept each other's potential and accept the differences between members participate in solving community problems together. Consistent with Puangsali<sup>[4]</sup> said that making people aware of citizenship aware of their power to be able to solve problems of themselves and society.

The organizational structure of the community found that people gather together under common needs or problems that It is extremely important for driving in the area. The organization structure is flat. The decision is the power of every citizen in the community which together to solve the problems for themselves. Consistent with Wibunphonprasert<sup>[5]</sup>. Whether the integration group may

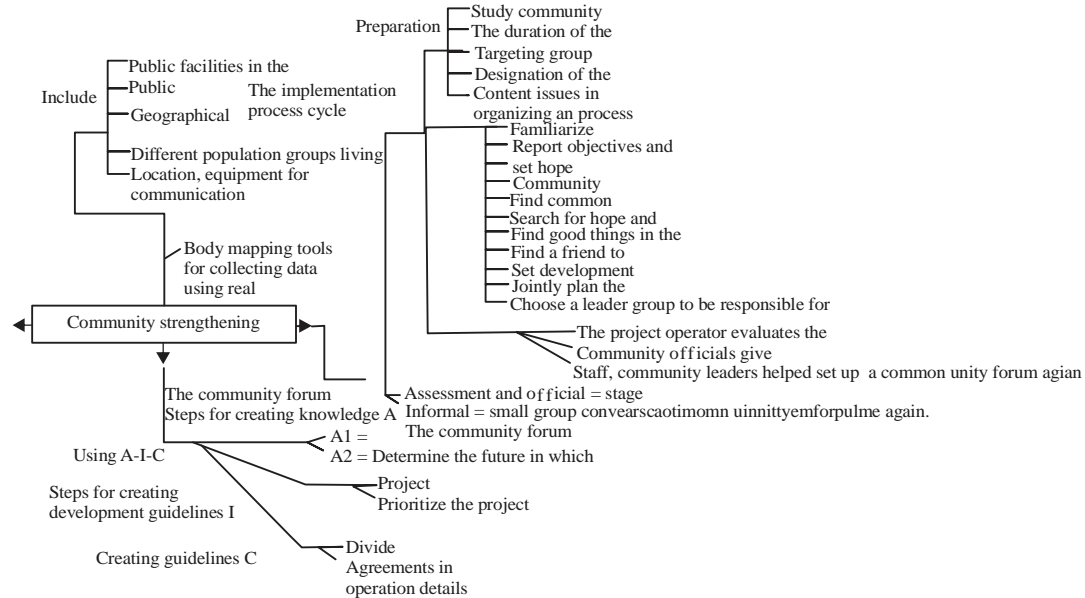


Fig. 2: Summarized of province

be formal or unofficial is a group that gathers together only for some specific time group members may be individuals in government, business or the public. The number of members is not limited. Important issues must have complete community awareness. Having an organization means having a management system. In order to learn together in practice and lead to problem solving community network found that people in the community exchanged news, information or activities together as well as creating a network of joint learning Which will lead to the power to connect communities with strength. Consistent with Wibunphonprasert<sup>[5]</sup>, said that the community has a process to connect members of various groups and community organizations with effective communication and public relations. Reconciliation resulting in the unification of the spirit and spirit of members and various community organizations to be strong. From the objective 3, the model of political strengthening through the community process of Ban Na Sub-district, Ban Na district, Nakhon Nayok province is as follows To strengthen morality, found that people in the community live together happily, love, unity, manage the community in accordance with good governance principles. Create fairness in the community, reducing problems or conflicts in the community and focus on creating greater benefits for oneself rather than oneself, create sustainable development. In line with Teekasap *et al.*<sup>[6]</sup>, it is said that strengthening morality is important in the community that will bring happiness and progress to that community. If people in the community have morals The mind would rise up and do whatever work would not cause trouble for both yourself and others. Focus on creating greater benefits for oneself rather than oneself.

Creating collaborative learning it is found that people in the community are aware of the importance of learning. Have skills and thinking processes, analyze, solve problems and apply knowledge everyone thinks and acts together as a partner. Have the same objective live life together with learning knowledge accumulation and the creation of new knowledge in order to develop themselves and the community. Consistent with the Kongcharoen<sup>[7]</sup> said that the community opened the opportunity and encourage the people in the community and various sectors to get to know, think, work and receive benefits and join There is cooperation from people in the community in every process.

Creating joint management, it is found that the people in the community manage to live in harmony with the natural resources and the environment in a peaceful and supportive way. By promoting community rights and community participation processes in preserving, preserving, rehabilitating, utilizing and increasing efficiency, managing natural resources and the environment in the local area by raising community awareness of resource values support community mechanisms and networks in managing and protecting natural resources and the environment that are linked to production for fair sustenance of the community and strengthening the capacity and knowledge of local administrative organizations in the management of natural resources and the environment to be a key partner in the conservation, rehabilitation and management of resources. Nature and environment Join with the community and relevant parties. Pipatchumroonkun<sup>[8]</sup> said that people in the community learn about the principles of managing their communities together.

## CONCLUSION

Conduct community management can study problems analyze problems, make plans and project, carry out community development, evaluation of lesson summary in operation by oneself, able to develop a community management and management system to suit the community situation.

## SUGGESTION

**Suggestions for utilization of research results:** The research process of the people in the community should be adjusted to be in line with changes in society, politics, culture and economy by passing on a great mission to inherit. And connect with future generations to create a sense of development and ready to solve problems for the community. There is a participatory learning process. Build credibility with unity, sacrifice honesty uphold the common good as a location. If the community is ready in all aspects, it will strengthen the community by being self-reliant more than a dependency from government and private agencies. In addition, the community should have the basic information of the community every area because it will make the community recognize themselves, know the weaknesses and strengths to see the problems of the community. Understand the connections within your community which is an important foundation for encouraging people to come together to solve problems. As well as providing a learning center as a basic source of information for the community with standards for counseling, transfer knowledge and information That people should know while also providing cooperation as a learning source, study trip to the community, educational institutions, related agencies which will be a way for other communities to develop themselves to be strong.

## REFERENCES

01. Burikun, T., 2005. [Participation, Concepts, Theories and Processes]. King Prajadhipok's Institute, Bangkok, Thailand, ISBN: 9744492171 99, (In Thai).
02. Naphisratchawan, R. T. Kaewkaew, W. Chongkhakitkit, P. Phromkaew, Dalimasadaengsarn and D. Songlert, 2017. Community participation process for health development. J. Southern Technol., 11: 231-238.
03. Weerayangkun, P., 2011. People participation in local development: A case study of Om Kred sub district administrative organization PAK Kret District Nonthaburi Province. Master Thesis, Silpakorn University, Bangkok, Thailand.
04. Puangsali, A., 1999. Characteristics of civil society in the Thai civil society movement. Master Thesis, Mahidol University, Salaya, Thailand.
05. Wibunphonprasert, S., 1997. Civil Society and Health Development: Academic Analysis. 2nd Edn., Institute of Health Systems Research, Bangkok, Thailand,.
06. Teekasap, P., S. Toraninpanich and S. Teekasap, 2018. Effect of light and heavy industries energy consumption on economic in Thailand. J. Renewable Energy Smart Grid Technol., Vol. 13, No. 2.
07. Kongcharoen, M., 2010. Development of community empowerment model: To enhance the sustainability of the learning community. M.Sc. Thesis, Chulalongkorn University, Bangkok, Thailand.
08. Pipatchumroonkun, Y., 2011. Development of a learning community model based on the sufficiency economy philosophy. Master Thesis, Kasetsart University, Bangkok, Thailand.