

Biohydrogen Production by Anaerobic Biofilms from a Pretreated Mixed Microflora

Ileana M.M. Moreno-Davila, Leopoldo J. Rios-Gonzalez, Jose G. Gaona-Lozano,
Yolanda Garza-Garcia, Jose A. Rodriguez-de la Garza and Jesus Rodriguez-Martínez
Department of Biotechnology, Universidad Autonoma de Coahuila, Saltillo, Coahuila, Mexico

Abstract: The present research focused on fermentative production of hydrogen by anaerobic biofilms from a pretreated mixed microflora in a continuous fixed bed-reactor. Microbial mixed culture was thermally (100°C, by 30 min) and acidic (pH 3.0, 24 h) pretreated. Metagenomic analysis of the pretreated microbial cultured was conducted. Microbial cultured community was mainly formed by lactic acid bacillus from *Phylum firmicutes*. Dairy wastewater (COD 27.73 g L⁻¹, pH 11.3) at a temperature of 18±5°C was fed to a 1.5 L continuous fixed bed-reactor using *Opuntia imbricata* as substratum. Results obtained showed that at an HRT of 0.4 h the yield hydrogen production was 2.11 mmol H₂ g⁻¹ COD_{consumed}, mean while an increase in HRT to 0.8 h caused a decrease in yield hydrogen production to 1.31 mmol H₂ g⁻¹ COD_{consumed}.

Key words: Fuel, hydrogen, metagenomic, *Opuntia imbricata*, dairy wastewater, firmicutes

INTRODUCTION

As a consequence of industrial development and population growth there has been an increase of 17 fold in the last century of energy consumption in the world. However, conventional energy resources like fossil fuels cannot meet the increasing energy demand (Nikolic *et al.*, 2009). This excessive usage of fossil fuels has caused a considerable negative environment impact e.g., global warming and acid rain resulting in serious effects on the earth's climate, weather conditions, vegetation and aquatic ecosystems (Alalayah *et al.*, 2008). Therefore, the use of biofuels as alternative energy sources has many advantages such as contribution to the reduction of CO₂ emission, lower dependency on the import of oil for non-oil producing countries, new employment opportunities and development of rural communities they are easily available from common biomass sources, biodegradable and contribute to the sustainability (Wang *et al.*, 2009a, b).

Hydrogen gas is a clean energy source with a high energy content of 122 kJ g⁻¹. Unlike fossil fuels hydrogen does not cause any CO₂, CO, SO_x and NO_x emissions and producing water as its only by-product when it burns reducing green house effects considerably (Chong *et al.*, 2009). Hydrogen is considered to be a major energy carrier of the future and can directly be used in fuel cells for electricity generation. However, currently 90% of H₂ is being produced from methane reformation or electrolysis of water and contributes to only 3% total energy

consumption (Sparling *et al.*, 2006). These processes are both energy intensive and not environment-friendly. Biological hydrogen production from renewable resources using microorganisms appears to be the most attractive method compared to other hydrogen production processes because it has fewer environmental concerns. Microorganisms that can produce hydrogen are anaerobes including photosynthetic microorganisms (photo fermentation) and anaerobic bacteria (dark fermentation) (Wang *et al.*, 2009a, b).

Fermentative hydrogen production with anaerobic bacteria is a promising way of economical and sustainable energy source generation (Ren *et al.*, 2009). A dark fermentative hydrogen production process can be conducted by using either pure cultures or mixed cultures. However, in a fermentative hydrogen production process using mixed cultures the seed sludge often needs a pretreatment to suppress as much hydrogen consuming bacterial activity as possible while still preserving the activity of the hydrogen-producing bacteria (Wang and Wan, 2009).

Recently, experiments have been carried out to study the possibility of hydrogen production using organic wastes from various industries in combination with the wastewater treatment strategy (Chong *et al.*, 2009). Food wastewater contains high concentrations of carbohydrates, lipids or peptones favoring bioconversion into hydrogen (Wu and Lin, 2004). Dairy wastewater contains complex organics such as polysaccharides, proteins and lipids which on hydrolysis form sugars,

amino acids and fatty acids. In subsequent acidogenic reaction, these intermediate products are converted to Volatile Fatty Acids (VFA) which are further degraded by acetogens forming acetate, CO₂ and H₂ (Mohan *et al.*, 2007).

The objective of this study was to investigate in a continuous flow fixed bed reactor the process of H₂ production from dairy wastewater with an anaerobic pretreated mixed microbial culture for biofilms formation on *Opuntia imbricata* to develop a stable anaerobic fermentation process for continuous H₂ production. Substratum used on this research has been tested to develop biofilm reactor systems useful for the treatment of different wastewaters.

Contrary to some synthetic organic or inorganic polymer materials such as resins, gels and fibers conventionally used as substratum, *Opuntia imbricata* is renewable with high grade of reusability and without disposal problems (Ilyna *et al.*, 2008). These properties were considered important to assess this material for H₂-producing biofilm developing. In addition 16S rDNA sequence analysis from anaerobic mixed cultures were carried out to establish predominant bacterial types that grew in the hydrogen process production in this particular research.

MATERIALS AND METHODS

Substratum pretreatment and preparation: Small pieces of dried stems of *Opuntia imbricata* were cut (previously wash and rinse) in segments of 2.5±0.2 cm in height and 2.5±0.5 cm in diameter (Fig. 1) and their characteristics are shown in Table 1.

Dairy wastewater: Dairy wastewater was collected directly from the company's sewage (Lacticinios Mexicanos, S.A. de C.V) located in Saltillo, Coahuila, Mexico. After recollection wastewater was stored at 4°C until characterization. Chemical Oxygen Demand (COD), pH, conductivity, Total Suspended Solids (TSS) was determined according to analytical methods described in APHA/AWWA/WEF (1998) (Table 2).

Pretreatment of anaerobic microbial mixed culture: Anaerobic microbial mixed culture (500 mL) was obtained from a UASB reactor that treated wastewater from brewery Modelo (Zacatecas, Mexico). Pretreatment was carried out as describe by (Chen and Hu, 2007). In the heat pretreatment, the granules or sludge was heated in boiling water bath for a short period of time (30 min) first then cooled down. Heat pretreatment was followed by acidic

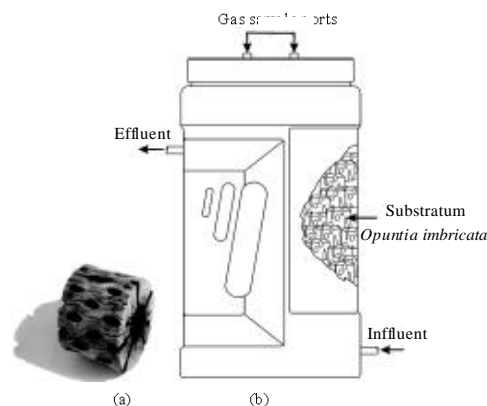


Fig. 1: Continuous fixed bed up-flow reactor packed with *Opuntia imbricata* used for hydrogen producing biofilm formation

Table 1: Characteristics of substratum

Parameters	Specification
Identification	<i>Opuntia imbricata</i>
Configuration	Fixed-bed
Origin	Natural
Height	2.5±0.2 cm
Diameter	2.5±0.5 cm
Density	0.838 g cm ⁻³
Specific surface area	0.599 m ² g ⁻¹ (from BET)

Table 2: Dairy wastewater composition

Parameters	Dairy wastewater
pH	11.32±0.240
COD (g L ⁻¹)	27.73±0.531
Conductivity (m S ⁻¹)	2640±52.8
TSS (g L ⁻¹)	21.9±0.557

pretreatment that involved decreasing the pH of the sludge or granule solution to 3.0 using 0.1N HCl solution for 24 h and a readjustment of pH back to 7.0 by 0.1N NaOH solution.

DNA extraction: Metagenomic DNA extraction from pretreated bacterial source sample was assayed according to the silica-based method proposed by Rojas *et al.* (2008).

PCR amplification: Universal primers gc338 (forward) (5'-ACTCCTACGGGAGGCAGCAG-3') and gc518 (reverse) (5'-ATTACCGCGGCTGCTGG-3') for the domain bacteria were used for amplification of the hypervariable V3 region on 16S rDNA. Both primers included a 40 base GC clamp and produced a 230 pb amplicon to be analyzed by DGGE (Hovda *et al.*, 2007). The PCR reaction mixture (25 µL) consisted of 5 mM MgCl₂, 200 µM each dNTP, 0.5 µM forward and reverse primers, 2.5 U Taq DNA polymerase (Bioline), 1-5 µL template (approximately 100-200 ng of metagenomic DNA) and 0.3% bovine serum

albumin (BSA, Sigma-Aldrich) in a proprietary buffer (pH 8.5). All PCR amplifications were performed on a thermal cycler My Cycler (Bio-Rad Laboratories Inc., USA) using a touchdown program. An initial denaturation for 5 min at 94°C was followed by a total of 30 cycles of amplification consisting of denaturation at 94°C for 60 sec, touchdown annealing (10 cycles from 65-55°C, 1°C decrement/cycle; 20 cycles at 55°C) for 45 sec and extension at 72°C for 60 sec. The program ended with an extension step at 72°C for 5 min. PCR products were examined and verified on 2% agarose gels and visualized by ethidium bromide staining (Sigma-Aldrich). The gels were photographed under UV light in a Bio-Rad GelDoc 2000 system (Bio-Rad Laboratories Inc., USA).

DGGE analysis: Denaturing gradient gel electrophoresis was performed with the DCode™ (Bio-Rad Laboratories Inc., USA) system and reagents from Sigma-Aldrich. Denaturation conditions were optimized based on preliminary results but generally, gels had denaturation gradients of 40-60% where 100% denaturant is defined as 7 M urea and 40% formamide. Gels were either 8% polyacrylamide or contained an 8-12% polyacrylamide gradient. Electrophoresis was at 60 V for 16 h. Gels were stained with Sybr®Gold (Invitrogen). Bands in DGGE images were identified visually on a presence-absence basis. PCR products were directly sequenced by an external sequencing service (Macrogen, USA) with the same primers used for amplification. Contig assembling and sequence alignment was performed with the free software BioEdit (Hall, 2005) and taxonomic classification and nearest neighbors with the RDP database (release 91) (Maidak *et al.*, 2001; Cole *et al.*, 2005). The RDP classifier uses a naive Bayesian method (Wang *et al.*, 2007). Phylogenetic inference based on 16S rRNA gene sequences was carried out following the maximum parsimony method by using bootstrap values based on 100 replications with program Winclada (Nixon, 1999).

Biofilm formation on *Opuntia imbricata*: Biofilm formation was carried out in a 1.5 L continuous fixed bed reactor (Fig. 1), 520 g (dried weight) of *Opuntia imbricata* (substratum preparation describe previously) was added. Finally 500 mL of pretreated anaerobic microbial mixed culture was added.

Reactor was fed by a peristaltic pump (Manostat division of Barnant Company, Simon varistaltic pump, USA) for a period of 30 days with following conditions; initial pH 7.0, temperature 20±3°C (ambient temperature), HRT = 2 h and initial wastewater concentration was 27.73 g COD L⁻¹ maintaining an initial concentration of substrate up to 12 g L⁻¹ thus to control a rank of

pH of 4-5, 5 by means of the effect of the substrate concentration during this period all parameters mentioned above were monitored on daily basis. Subsequently HRT was decreased to 1 h for a period of 30 days maintaining rest of condition (pH, temperature and concentration) as mentioned above.

HRT influence on hydrogen production: Two HRT's (0.4 and 0.8 h) were assessed for this stage of the research. Dairy wastewater concentration was 27.73 g L⁻¹, pH 11.32 and temperature (ambient) 18±5°C.

Analysis: The analysis of hydrogen and methane were determined by Gas Chromatography (GC TCD) Varian 3400, equipped with a Molecular Sieve 5[°] packed column injecting 25 µL using a 1 mL syringe. GC conditions were as followed injector and detector temperature 200°C, column temperature 50°C using helium as carrier gas with flow rate 6 mL min⁻¹. Removal of COD was determined according to analytical methods described by APHA/AWWA/WEF (1998). The pH was determined from effluent and measured by potentiometer (WTW, Inolab-pH/ION Level 2). All data collected represents the means of three replications that were obtained for each experiment.

RESULTS AND DISCUSSION

Metagenomic analysis of pretreated mixed microbial consortium pretreated: The microbial community of the biofilm used for biohydrogen production was studied by PCR and DGGE analysis of the pretreated mixed microbial consortium. The metagenomic DNA extracted from the consortium had a high molecular weight with a size near to 20 kb and show scarce evidence of degradation. Molecular analysis using PCR-DGGE followed by sequencing enabled characterization of the bacterial population in the biofilm reactor (Fig. 2a). This approach allows detection of the dominant bacteria present in the samples by sequencing the interesting gel bands (Fig. 2b).

Excised DGGE bands were compared with BLAST references based on the phylogenetic relationship of the ~230 bp partial 16S rDNA sequence of the hypervariable V3 region. The V3 region is regarded as a good choice when it comes to length and species-species heterogeneity (Coppola *et al.*, 2001; Ercolini, 2004), the region is also considered to be highly variable and have a high grade of resolution. Comparison of the 16S rDNA sequences to databases showed most belonged to the *Firmicutes phylum* being lactic acid bacteria the predominant population in the mixed microbial consortium. These sequences share a high identity to different taxonomic ranks such as Bacillales and Lactobacillales.

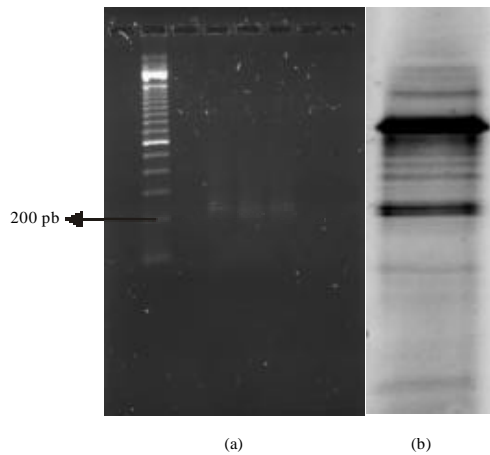


Fig. 2: a) PCR product amplified with universal primers 318 and gc518; b) DGGE analysis of a pretreated mixed microbial consortium for the fermentative hydrogen production from dairy wastewater. The m_g ADN extracted was PCR amplified using primers gc318/gc518

Recent reports of hydrogen production by microbial mixed culture made same approach by metagenomic analysis (Yang *et al.*, 2007) carried out the 16S rDNA analysis of DNA extracted from bioreactors during periods of high H_2 production from cheese processing wastewater observing that >50% of the bacteria present were members of the genus *Lactobacillus* and about 5% were Clostridia (Angelidaki *et al.*, 2008) carried out same analysis for identification of hydrogen producing bacteria from the granules obtained of thermophilic anaerobic reactors (60 and 70°C) with different carbon source, they found that *Firmicutes* phylum had a population density of 15-27% at 60°C and 17-20% at 70°C, confirming early reports by Cheong and Hansen (2007) whom mentioned that some species of *Bacillus* and *Clostridium* are hydrogen producing bacteria and resistant to high temperatures and desiccation due to formation of spores remaining only microorganisms capable of forming spores and eliminating methanogens that do not possess this capability. Some other research have mentioned the effect of acidic pretreatment on microbial community causing important change on community microbial distribution as mentioned by Hwang *et al.* (2009) that used FISH method and the LIVE/DEAD cell viability test and observed that after the acid pre-treatment (HCl, HNO₃ and H₂SO₄), the rate of bio- H_2 production increased rapidly and the number of viable cells belonging to *Clostridium* sp. also increased.

Influence of HRT on hydrogen production in fixed bed up-flow reactor: Hydrogen production on a continuous

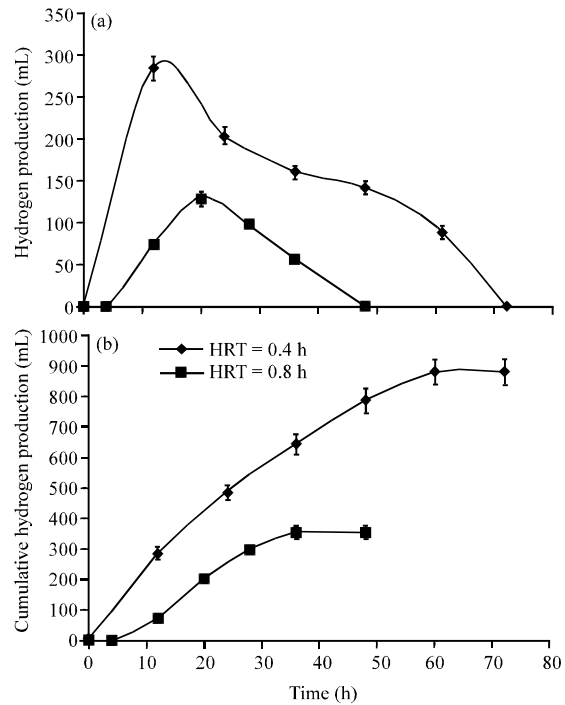


Fig. 3: a) Hydrogen production (mL) and b) cumulative hydrogen production (mL) at different HRT's (0.4 y 0.8 h), by a continuous fixed-bed up-flow reactor with *Opuntia imbricata* as substratum using dairy wastewater (COD 27.73 g L⁻¹; initial pH 11.32; temperature 18±5°C)

fixed bed up-flow reactor at different HRT's (0.8 and 0.4 h) with initial COD concentration 27.33 gL⁻¹, pH 11.32 at ambient temperature (18±5°C) is shown on Fig. 3a. Hydrogen production was higher at HRT of 0.4 h with maximum of 283 mL of hydrogen after 12 h (1.2 fold higher than HRT 0.8 h) and only 128 mL of hydrogen after 20 h for the case of HRT of 0.8 h. Figure 3b shows same behavior of cumulative hydrogen production at different HRT's where at HRT of 0.4 h there was an accumulated production of 880 mL of hydrogen after 60 h whereas at HRT of 0.8 h there was only 353 mL of hydrogen after 48 h. These differences were reflected directly on hydrogen yield production showing that at an HRT of 0.4 h, hydrogen yield production was 2.11 mmol H₂ g⁻¹ COD_{consumed} whereas an increase on HRT caused a drop on hydrogen yield production to 1.31 mmol H₂ g⁻¹ COD_{consumed} (Table 3).

Yang *et al.* (2007) obtained a hydrogen yield production of 1.8-2.3 mmol H₂g⁻¹ COD_{consumed} at an HRT of 24 h at a pH range of 4.0-5.0 using synthetic dairy wastewater under mesophilic conditions. Figure 3a shows a lag phase of 4 h when an HRT's of 0.8 h was used this behavior is due to a lower decrease rate of pH level in the

Table 3: COD removal (%) and H₂ yield production by a continuous fixed-bed up-flow reactor with *Opuntia imbricata* as substratum at different HRT's

HRT (h)	H ₂ yield production (mmol H ₂ g ⁻¹ COD _{consumed})
0.4	2.11
0.8	1.31

COD_c: Chemical Oxygen Demand consumed

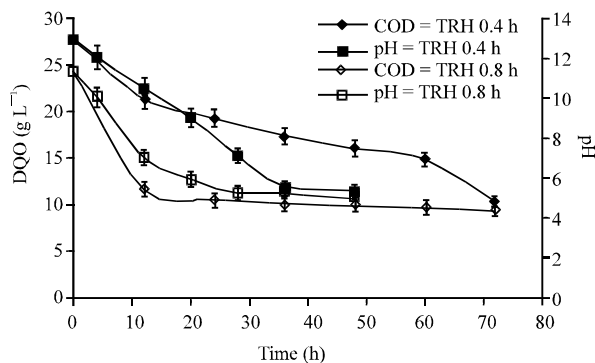


Fig. 4: COD removal and behavior of pH of the effluent of a continuous fixed-bed up-flow reactor with *Opuntia imbricata* as substratum at different HRT's (0.4 and 0.8 h) using dairy wastewater (COD 27.73 g L⁻¹; initial pH 11.32; temperature 18±5°C)

medium (Fig. 4). Behavior of pH can be shown in Fig. 4. For HRT of 0.4 h the decrease rate pH level was faster, reaching a pH of 5.4 after 12 h whereas with a HRT of 0.8 h, pH only decreases to 7.01 during the same period of time.

It is mentioned when using a microbial mixed culture and drastic changes on pH, HRT, temperature and substrate concentration occurs, this can affect the metabolism of hydrogen producing bacteria or a shift on the microbial community can take place, leading to a change in fermentation sub-products and decreasing the hydrogen yield production (Kalia and Purohit, 2008).

Fermentative hydrogen production with microbial mixed culture can take place in a wide range of pH from 3.3-5.0 (Gadhamshtetty *et al.*, 2009) contributing to inhibition of methanogenic bacteria that cannot tolerate pH below 5 according to different reports (Kim *et al.*, 2003). However, Kim *et al.* (2003) reported that hydrogenotrophic methanogens can tolerate pH below 5 but was not the case for acetoclastic methanogens that were completely inhibit. It also mentioned by Kim *et al.* (2003) that at high HRT's hydrogenotrophic methanogens can tolerate acidic conditions more than other methanogens groups. Chen *et al.* (2001) reported a slight methanogenic activity under high dilution rates conditions (HRT of 1 h), however they mentioned if the characteristics of wastewater required a large time of

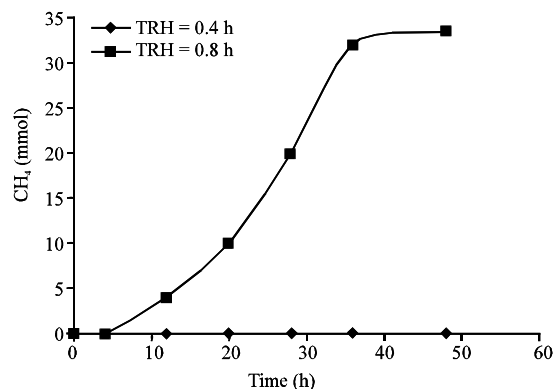


Fig. 5: Methane production (mmol) on a continuous fixed-bed up-flow reactor with *Opuntia imbricata* as substratum at different HRT's (0.4 and 0.8 h) using dairy wastewater (COD 27.73 g L⁻¹; initial pH 11.32; temperature 18±5°C)

hydrolysis, methanogenic activity may not be inhibit if HRT is not short enough. Chen *et al.* (2001) also mentioned that a shift in pH from 4.3-6 caused a cease in hydrogen production and only carbon dioxide was produced. These results indicate that a reduction in microbial activity occurs or a shift on the microbial community took place.

Figure 3a also shows that in both HRT cases there was a decrease in hydrogen production as a result of substantial COD consumption (Fig. 4) where at an HRT of 0.8 h COD after 36 h diminish to 11.9 g L⁻¹ and for the case of HRT of 0.4 h it was 17.3 g L⁻¹. Early studies on batch showed that hydrogen production was detected at COD concentration over 12 g L⁻¹.

Previous studies on batch proved that hydrogen production took place on concentrations of COD higher than 12 g L⁻¹, however on concentrations below 12.0 g L⁻¹ of COD, methane production is enable leading to a decrease on hydrogen production. This can be observed on (Fig. 4) where removal of COD from 14.8-10.3 g L⁻¹ after 60-70 h at an HRT of 0.4 h influence the hydrogen production process causing a decrease in hydrogen as mentioned before (Fig. 3a). COD removal efficiency for both cases was 62.34% after 72 h and 58.78% after 48 h for HRT of 0.4 and 0.8 h, respectably. This concurs with early reports by Lin *et al.* (2006) in which using high concentration of substrate (glucose 15-25 g L⁻¹) hydrogen production was detected and Kyazze reported hydrogen production even at higher concentrations of substrate using saccharose up to 40 g L⁻¹. Figure 5 shows that an HRT of 0.4 h, methanogenic activity was completely inhibit due to fast drop on pH (4.5-5.0) favoring hydrogen producing bacteria. However,

in spite of being a short HRT (0.8 h) and taking in account early reports in which HRT's similar to the those use on this study (0.5-24 h) in where it was reported a high yield hydrogen production (Wu *et al.*, 2006; Yang *et al.*, 2007) for the case (0.8 h) it was observed that methanogenic activity was not completely inhibit. This behavior can be explained due the use of biofilms system in which regularly the specific activity is increased and also this type of systems offer a higher operational stability (Qureshi *et al.*, 2005). Also this is mentioned by Wu and Chang (2007) in which the microbial community is protected by the polymeric matrix and allows tolerating extreme environmental conditions.

CONCLUSION

Results obtained by metagenomic analysis of the microbial mixed culture concluded that the main bacterial microbiota was found to be lactic acid bacteria of *Firmicutes* phylum. HRT had a strong influence on yield hydrogen production showing that the change of HRT from 0.8-0.4 h enhanced the yield hydrogen production from 1.31 mmol H₂ g⁻¹ COD consumed to 2.11 mmol H₂ g⁻¹ COD consumed.

The use of *Opuntia imbricata* as substratum for biofilm formation enhanced the hydrogen production offering economical and technical advantages over the use of pure culture, avoiding expensive sterilization requirements, extra use of energy for temperature and pH control.

ACKNOWLEDGEMENTS

The present research was supported by National Council for Science and Technology of Mexico (CONACYT). We also thank Dr. Rafael A. Rojas Herrera (Facultad de Ingenieria Quimica de la Universidad Autonoma de Yucatan) for his collaboration in molecular analysis as well for his invaluable knowledge that to contribute to the writing of this study.

REFERENCES

APHA/AWWA/WEF, 1998. Standard Methods for the Examination of Water and Wastewater. 20th Edn., American Public Health Association/American Water Works Association/Water Environment Federation, Washington, DC., USA., ISBN: 0-87553-235-7.

Alalayah, W.M., M.S. Kalil, A.H. Kadhum, J.M. Jahim and N.M. Alaug, 2008. Hydrogen production using *Clostridium saccharoperbutylacetonicum* N1-4 (ATCC 13564). Int. J. Hydrogen Energy, 33: 7392-7396.

Angelidaki, I., O.T. Sompong, P. Poonsuk and K. Dimitar, 2008. 16S rRNA-targeted probes for specific detection of *Thermoanaerobacterium* spp., *Thermoanaerobacterium thermosaccharolyticum* and *Caldicellulosiruptor* spp. by fluorescent *in situ* hybridization in biohydrogen producing systems. Int. J. Hydrogen Energy, 33: 6082-6091.

Chen, C.C., C.Y. Lin and J.S. Chang, 2001. Kinetics of hydrogen production with continuous anaerobic cultures utilizing sucrose as the limiting substrate. Applied Microbiol. Biotechnol., 57: 56-64.

Chen, S. and B. Hu, 2007. Pretreatment of methanogenic granules for immobilized hydrogen fermentation. Int. J. Hydrogen Energy, 34: 3266-3273.

Cheong, D.Y. and C.L. Hansen, 2007. Feasibility of hydrogen production in thermophilic mixed fermentation by natural anaerobes. Biores. Technol., 98: 2229-2239.

Chong, M.L., V. Sabaratnam, Y. Shirai and M.A. Hassan, 2009. Biohydrogen production from biomass and industrial wastes by dark fermentation. Int. J. Hydrogen Energy, 34: 3277-3287.

Cole, J.R., B. Chai, R.J. Farris, Q. Wang and S.A. Kulam *et al.*, 2005. The Ribosomal Database Project (RDP-II): Sequences and tools for high-throughput rRNA analysis. Nucleic. Acids Res., 33: D294-D296.

Coppola, S., G. Blaiotta, D. Ercolini and G. Moschetti, 2001. Molecular evaluation of microbial diversity occurring in different types of Mozzarella cheese. J. Applied Microbiol., 90: 414-420.

Ercolini, D., 2004. PCR-DGGE fingerprinting: Novel strategies for detection of microbes in food. J. Microbiol. Methods, 56: 297-314.

Gadhamshtetty, V., D. Johnson, N. Nirmalakhandan, G. Smith and S. Deng, 2009. Dark and acidic conditions for fermentative hydrogen production. Int. J. Hydrogen Energy, 34: 821-826.

Hall, T., 2005. BioEdit: Biological sequence alignment Editor written for Windows 95/98/NT/2000/XP. <http://www.mbio.ncsu.edu/BioEdit/bioedit.html>.

Hovda, M.B., M. Sivertsvik, B.T. Lunestad, G. Lorentzen and J.T. Rosnes, 2007. Characterization of the dominant bacterial population in modified atmosphere packaged farmed halibut (*Hippoglossus hippoglossus*) based on 16S rDNA-DGGE. Food Microbiol., 24: 362-371.

Hwang, S.J., M.J. Lee and J.H. Song, 2009. Effects of acid Pre-treatment on biohydrogen production and microbial communities during dark fermentation. Biores. Technol., 100: 1491-1493.

- Ilyna, A., P. Huerta-Guel, J.L. Martinez-Hernandez, J. Rodriguez Martinez and A. Gorokhovskiy, 2008. Stability and activity of bovine prostaglandin H synthase immobilized on *Opuntia imbricata* (coyonoxtle). *J. Mol. Catal. B-Enzym.*, 51: 1-9.
- Kalia, V.C. and H.J. Purohit, 2008. Microbial diversity and genomics in aid of bioenergy. *J. Ind. Microbiol. Biotechnol.*, 35: 403-419.
- Kim, I.S., M.H. Hwang, N.J. Jang, S.H. Hyun and S.T. Lee, 2003. Effect of low pH on the activity of hydrogen utilizing methanogen in bio-hydrogen process. *Int. J. Hydrogen Energy*, 29: 1133-1140.
- Lin, C.Y., C.H. Hung, C.H. Chen, W.T. Chung and L.H. Cheng, 2006. Effects of initial cultivation pH on fermentative hydrogen production from xylose using natural mixed cultures. *Process Biochem.*, 41: 1383-1390.
- Maidak, B.L., J.L. Cole, T.G. Lilburn, C.T. Jr. Parker and P.R. Saxman *et al.*, 2001. The RDP-II (Ribosomal Database Project). *Nucleic Acids Res.*, 29: 173-174.
- Mohan, S.V., Y.V. Bhaskar, P.M. Krishna, N.C. Rao and V.L. Babu, 2007. Biohydrogen production from chemical wastewater as substrate by selectively enriched anaerobic mixed consortia: Influence of fermentation pH and substrate composition. *Int. J. Hydrogen Energy*, 32: 2286-2295.
- Nikolic, S., L. Mojovic, M. Rakin and D. Pejin, 2009. Bioethanol production from corn meal by simultaneous enzymatic saccharification and fermentation with immobilized cells of *Saccharomyces cerevisiae* var. *ellipsoideus*. *Fuel*, 88: 1602-1607.
- Nixon, K.C., 1999. The Parsimony Ratchet, a new method for rapid parsimony analysis. *Cladistics*, 15: 407-414.
- Qureshi, N., B.A. Annous, T.C. Ezeji, P. Karcher and I.A. Maddox, 2005. Biofilm reactors for industrial bioconversion processes: Employing potential of enhanced reaction rates. *Microbial Cell Factories*, 4: 24-24.
- Ren, Y., J. Wang, Z. Liu, Y. Ren and G. Li, 2009. Hydrogen production from the monomeric sugars hydrolyzed from hemicellulose by *Enterobacter aerogenes*. *Renewable Energy*, 34: 2774-2779.
- Rojas, H.R., Z.J. Narváez, M.N. Zamudio and M.M.E. Mena, 2008. A simple silica-based method for metagenomic DNA extraction from soils and sediments. *Mol. Biotechnol.*, 40: 13-17.
- Sparling, R., D.B. Levin, R. Islam and N. Cicek, 2006. Hydrogen production by *Clostridium thermoCELLUM* 27045 from cellulosic biomass substrates. *Int. J. Hydrogen Energy*, 31: 1496-1503.
- Wang, X., P.T. Monis, C.P. Saint and B. Jin, 2009a. Biochemical kinetics of fermentative hydrogen production by *Clostridium butyricum* W5. *Int. J. Hydrogen Energy*, 34: 791-798.
- Wang, A., L. Gao, N. Ren, J. Xu and C. Liu, 2009b. Biohydrogen production from cellulose by sequential co-culture of cellulosic hydrogen bacteria of *Enterococcus gallinarum* G1 and *Ethanoigenens harbinense* B49. *Biotechnol. Lett.*, 31: 1321-1326.
- Wang, J. and W. Wan, 2009. Experimental design methods for fermentative hydrogen production: A review. *Int. J. Hydrogen Energy*, 34: 235-244.
- Wang, Q., G.M. Garrity, J.M. Tiedje and J.R. Cole, 2007. Naïve Bayesian classifier for rapid assignment of rRNA sequences into the new bacterial taxonomy. *Applied Environ. Microbiol.*, 73: 5261-5267.
- Wu, J.H. and C.Y. Lin, 2004. Biohydrogen production by mesophilic fermentation of food wastewater. *Water Sci. Technol.*, 49: 223-228.
- Wu, K.J. and J.S. Chang, 2007. Batch and continuous fermentative production of hydrogen with anaerobic sludge entrapped in a composite polymeric matrix. *Process Biochem.*, 42: 279-284.
- Wu, S.Y., C.H. Hung, C.N. Lin, H.W. Chen, A.S. Lee and J.S. Chang, 2006. Fermentative hydrogen production and bacterial community structure in high-rate anaerobic bioreactors containing silicone-immobilized and self-flocculated sludge. *Biotechnol. Bioeng.*, 93: 934-946.
- Yang, P., R. Zhang, J. McGarvey and J. Benemann, 2007. Biohydrogen production from cheese processing wastewater by anaerobic fermentation using microbial communities. *Int. J. Hydrogen Energy*, 32: 4761-4771.