

Mechanically Actuated Capacitor Microphone Control using MPC and NARMA-L2 Controllers

¹Mustefa Jibril, ¹Messay Tadese and ²Eliyas Alemayehu Tadese

¹*School of Electrical and Computer Engineering, Dire Dawa Institute of Technology, Dire Dawa, Ethiopia*

²*Faculty of Electrical and Computer Engineering, Jimma Institute of Technology, Jimma, Ethiopia*

Key words: Microphone, nonlinear auto regressive moving average-L2, model predictive control

Corresponding Author:

Mustefa Jibril

School of Electrical and Computer Engineering, Dire Dawa Institute of Technology, Dire Dawa, Ethiopia

Page No.: 166-171

Volume: 16, Issue 5, 2021

ISSN: 1816-949x

Journal of Engineering and Applied Sciences

Copy Right: Medwell Publications

Abstract: In this study, a capacitor microphone system is presented to improve the conversion of mechanical energy to electrical energy using a nonlinear auto regressive moving average-L2 (NARMA-L2) and Model Predictive Control (MPC) controllers for the analysis of the open loop and closed loop system. The open loop system response shows that the output voltage signal need to be improved. The comparison of the closed loop system with the proposed controllers have been analyzed and a promising result have been obtained using MATLAB/Simulink.

INTRODUCTION

A capacitor microphone is a device which makes use of a capacitor to convert acoustical power into electric energy. Capacitor microphones require electricity from a battery or external supply. The ensuing audio signal is stronger signal than that from a dynamic. Capacitor microphone also have a tendency to be more sensitive and responsive than dynamics, making them properly-desirable to capturing subtle nuances in a sound. They are not best for excessive volume work as their sensitivity makes them susceptible to distort. A capacitor has two plates with a voltage between them. In the capacitor mic, this sort of plates is product of very light fabric and acts as the diaphragm. The diaphragm vibrates when struck through sound waves, changing the space between the 2 plates and therefore, changing the capacitance. Specifically, whilst the plates are nearer collectively, capacitance will increase and a charge current occurs. When the plates are in addition apart, capacitance decreases and a discharge current occurs. A

voltage is required across the capacitor for this to paintings. This voltage is provided both by using a battery inside the mic or via. external phantom power^[1].

MATERIALS AND METHODS

Mathematical modeling of a capacitor microphone:

Figure 1 shows a system in which that takes place in a capacitor microphone. Plate a of the capacitor is attached to the rigid body. Sound waves impinge upon and exert a force on plate b of mass M which is suspended from the rigid body by a spring K and which has damping B . The output voltage at the resistor R is intended to reproduce electrically the sound-wave patterns.

At equilibrium, with no external force extended on plate b, there is a charge q_0 on the capacitor. This produces a force of attraction between the plates, so that, the spring is stretched by an amount x_1 and the space between the plates is x_0 . When sound waves exert a force on plate b there will be a resulting motion x that is measured from the equilibrium position. The distance

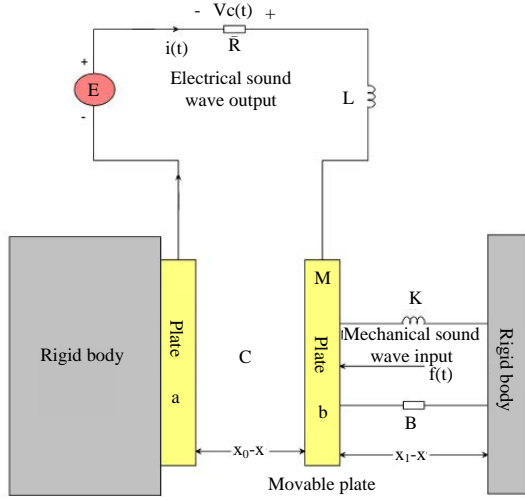


Fig. 1: Capacitor microphone system

between the plates will then be $x_0 - x$ and the charge on the plates will be $q_0 + q$. The capacitance is approximated by:

$$C = \frac{\epsilon A}{x_0 - x} \quad \text{and} \quad C_0 = \frac{\epsilon A}{x_0} \quad (1)$$

where, ϵ is the dielectric constant for air and A is the area of the plate. We assume that the displacement of x_0 is big, so, the circuit become open circuit and the initial current becomes zero. The energy expressions for this system are:

$$T = \frac{1}{2} L \dot{q}^2 + \frac{1}{2} M \dot{x}^2 \quad (2)$$

$$D = \frac{1}{2} R \dot{q}^2 + \frac{1}{2} B \dot{x}^2 \quad (3)$$

$$V = \frac{1}{2\epsilon A} (x_0 - x)(q_0 + q)^2 + \frac{1}{2} K (x_1 + x)^2 \quad (4)$$

The two degrees of freedom are the displacement x of plate b and the charge q on the capacitor. Applying Lagrange's equation twice gives^[2]:

$$M\ddot{x} + B\dot{x} - \frac{1}{2\epsilon A} (q_0 + q)^2 + K(x_1 + x) = f(t) \quad (5)$$

$$L\ddot{q} + R\dot{q} + \frac{1}{\epsilon A} (x_0 - x)(q_0 - q) = E \quad (6)$$

These equations are nonlinear. However, a good linear approximation can be obtained because x and q are very small quantities and therefore, the x_2 , q_2 and x_q terms can be neglected. This gives:

$$(q_0 - q)^2 \approx q_0^2 + 2q_0q$$

$$(x_0 - x)(q_0 - q) \approx x_0q_0 - q_0x + x_0q$$

With these approximations the system equations become:

$$M\ddot{x} + Kx_1 + Kx - \frac{q_0^2}{2\epsilon A} - \frac{2q_0q}{2\epsilon A} + B\dot{x} = f(t) \quad (7)$$

$$L\ddot{q} + \frac{x_0q_0}{\epsilon A} - \frac{q_0x}{\epsilon A} + \frac{x_0q}{\epsilon A} + R\dot{q} = E \quad (8)$$

From Eq. 7 by setting $f(t) = 0$ and taking steady-state conditions, the result is:

$$Kx_1 - \frac{q_0^2}{2\epsilon A} = 0$$

Similarly, in Eq. 8 at equilibrium:

$$\frac{x_0q_0}{\epsilon A} = \frac{q_0}{C_0} = E$$

Therefore, the two system equations can be written in linearized form as:

$$M\ddot{x} + B\dot{x} + Kx - \frac{q_0}{\epsilon A} q = f(t) \quad (9)$$

$$L\ddot{q} + R\dot{q} + \frac{q}{C_0} - \frac{q_0}{\epsilon A} x = 0 \quad (10)$$

Let:

$$x_1 = x, x_2 = \dot{x} = v, x_3 = q, x_4 = \dot{q} = i \quad \text{and} \quad u = f(t)$$

The state space representation of the system becomes:

$$\begin{bmatrix} \dot{x}_1 \\ \dot{x}_2 \\ \dot{x}_3 \\ \dot{x}_4 \end{bmatrix} = \begin{bmatrix} 0 & 1 & 0 & 0 \\ -\frac{K}{M} & -\frac{B}{M} & \frac{q_0}{\epsilon A} & 0 \\ 0 & 0 & 0 & 1 \\ \frac{q_0}{\epsilon AL} & 0 & -\frac{x_0}{\epsilon AL} & -R \end{bmatrix} \begin{bmatrix} x_1 \\ x_2 \\ x_3 \\ x_4 \end{bmatrix} + \begin{bmatrix} 0 \\ 1 \\ 0 \\ 0 \end{bmatrix} u \quad y = [0 \ 0 \ 0 \ 1] \begin{bmatrix} x_1 \\ x_2 \\ x_3 \\ x_4 \end{bmatrix}$$

The system parameters are shown in Table 1. The transfer function between the input force and the output charge become:

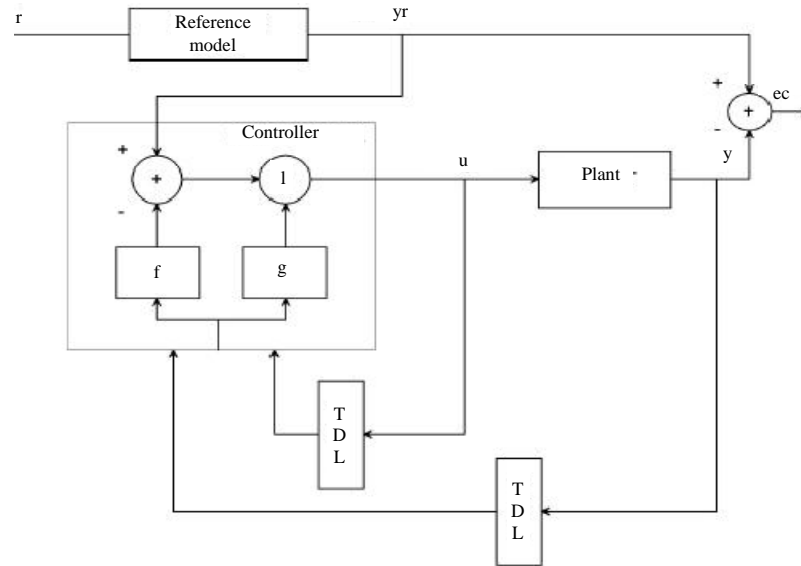


Fig. 2: NARMA-L2 controller

Table 1: System parameters

Parameter	Symbol	Values
Mass of the plate	M	0.1 (kg)
Spring stiffness	K	0.5 (N/m)
Damping coefficient	B	0.12 (N-s/m)
Area of the plate	A	0.00005 (m ²)
Inductance of the circuit	L	5 (k)
Resistance of the circuit	R	23 (Ω)
Capacitance dielectric constant	ε	8.85×10 ⁻¹² (F/m)
Initial charge	q ₀	6.28×10 ⁻¹⁵ (C)
Plates initial displacement	x ₀	7×10 ⁻⁴ (m)

$$G(s) = \frac{I(s)}{F(s)} = \frac{2.838s}{s^4 + 24.2s^3 + 3.164 \times 10^{11}s^2 + 3.797 \times 10^{11}s + 1.582 \times 10^{12}} \quad (11)$$

The output voltage at the resistor R is:

$$V_R(s) = RI(s) \quad (12)$$

Substituting Eq. (12) in to Eq. (11) the transfer function between the input force and the output resistance voltage become:

$$G(s) = \frac{V_R(s)}{F(s)} = \frac{65.3s}{s^4 + 24.2s^3 + 3.164 \times 10^{11}s^2 + 3.797 \times 10^{11}s + 1.582 \times 10^{12}}$$

Proposed controllers design

NARMA-L2 controller design: One of the primary capabilities of the NARMA-L2 neuro-controller is to transform nonlinear system dynamics into linear dynamics by canceling the nonlinearities. We start off evolved by means of describing how the identified neural community

Table 2: Neural network parameters

Network architecture			
Variables	Values	Variables	Values
Size of hidden layer	6	Delayed plant input	4
Sample interval(sec)	0.1	Delayed plant output	4
Training data			
Training sample	65	Maximum Plant output	2
Maximum plant input	2	Minimum Plant output	1
Minimum plant input	1	Max interval value (sec)	30
Min interval value (sec)	-	-	15
Training parameters			
Training epochs	-	-	65

model may be used to design a controller. The advantage of the NARMA-L2 form is that you may remedy for the control input that reasons the system output to observe a reference signal (Fig. 2).

Table 2 illustrates the network architecture, training data and training parameters of the proposed controllers.

MPC control: A block diagram of a model predictive control system is shown in Fig. 3. A system model is used to count on the modern values of the output variables^[3].

The residuals, the variations a number of the actual and predicted outputs, function the comments sign to a prediction block. The predictions are utilized in two styles of MPC calculations which might be achieved at each sampling right now: set-factor calculations and manage calculations. Inequality constraints at the input and output variables, consisting of better and decrease limits can be included in both type of calculation.

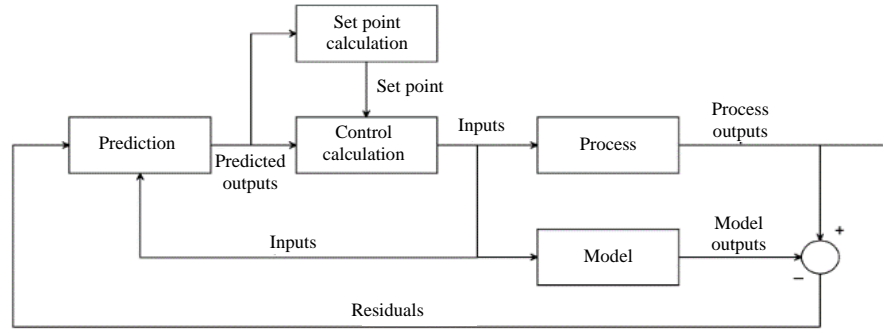


Fig. 3: Block diagram for model predictive control

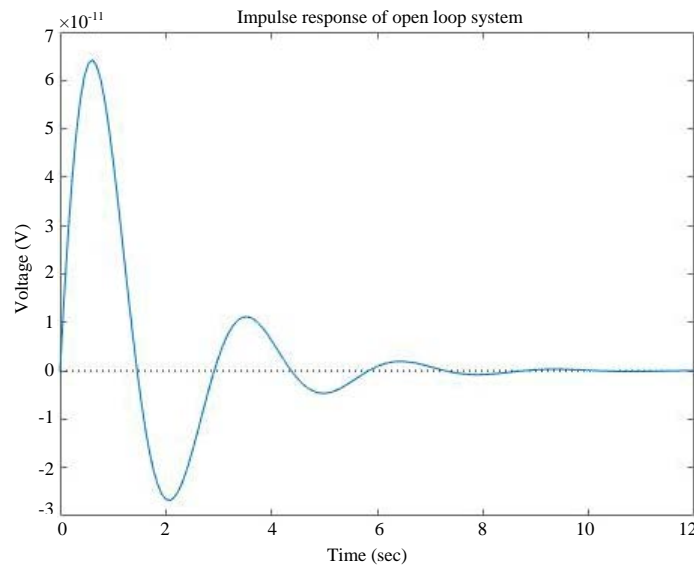


Fig. 4: Open loop response

RESULTS AND DISCUSSION

Open loop response of the capacitor microphone system: The response of the open loop capacitor microphone for a 0.01 N impulse response is shown in Fig. 4.

The simulation result shows that an electrical sound waves generated at the resistor and its value decreased until becomes zero because of the capacitor discharge the energy accumulated. The voltage output need to be improved in gain value and minimize the overshoot and settling time that's why we use a controller to improve the system^[4].

Comparison of the capacitor microphone system with NARMA-L2 and MPC controllers for a step desired sound waves voltage input: The simulink model of the capacitor microphone system with NARMA-L2 and MPC controllers for a step desired sound waves voltage input signal is shown in Fig. 5. The simulation result is shown in Fig. 6.

Table 3: Step response data

Performance data	NARMA-L2	MPC
Rise time	1.08 (sec)	1.08 (sec)
Per. overshoot	12.5 (%)	32.5 (%)
Settling time	1.38 (sec)	1.38 (sec)
Peak value	4.5 (V)	5.3 (V)

The data of the rise time, percentage overshoot, settling time and peak value is shown in Table 3. As Table 3 shows that the capacitor microphone system with NARMA-L2 controller improves the performance of the system by minimizing the percentage overshoot^[5].

Comparison of the capacitor microphone system with NARMA-L2 and MPC controllers for a random desired sound waves voltage input: The Simulink model of the capacitor microphone system with NARMA-L2 and MPC controllers for a random desired sound waves voltage input signal is shown in Fig. 7. The simulation result is shown in Fig. 8.

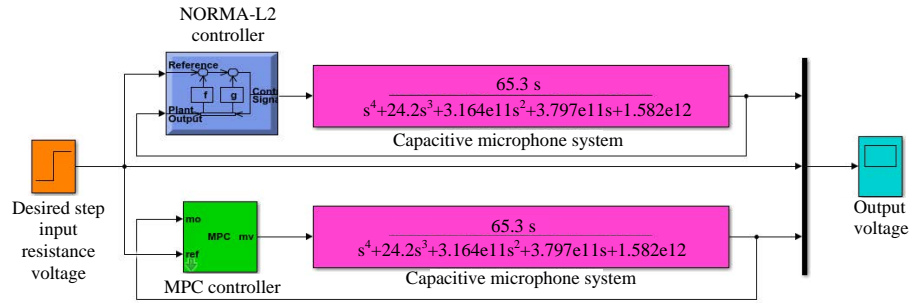


Fig. 5: Simulink model of the capacitor microphone system with NARMA-L2 and MPC controllers for a step desired sound waves voltage input signal

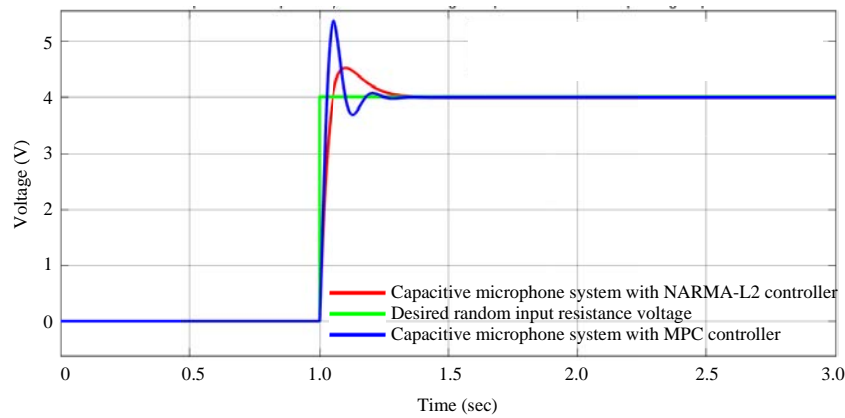


Fig. 6: Step response simulation result

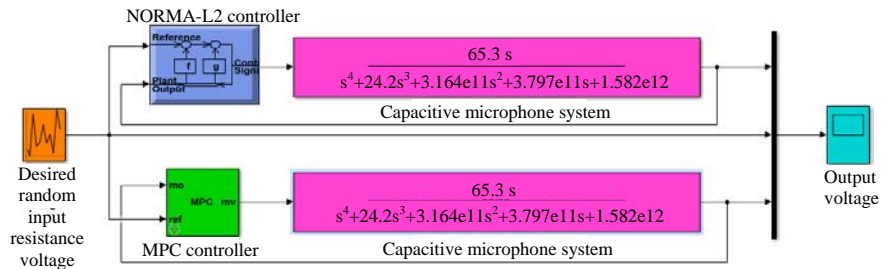


Fig. 7: Simulink model of the capacitor microphone system with NARMA-L2 and MPC controllers for a random desired sound waves voltage input signal

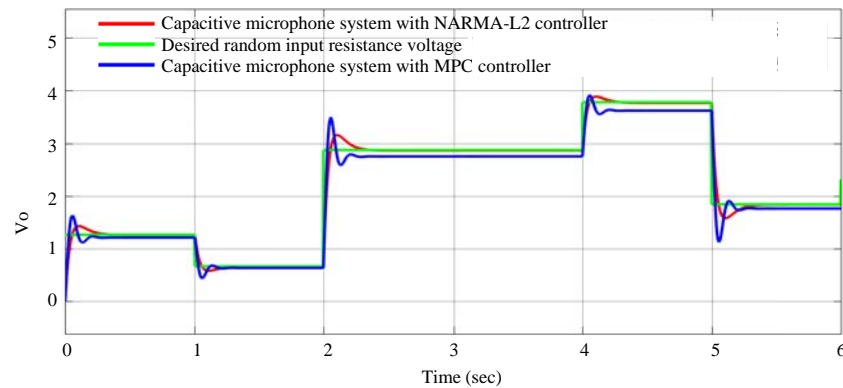


Fig. 8: Random response simulation result

The simulation result shows that the capacitor microphone system with NARMA-L2 controller improves the performance of the system by minimizing the percentage overshoot with an exact steady state value while the capacitor microphone system with MPC controller losses its performance in tracking the steady state value after 2 sec^[6].

CONCLUSION

In this study, a capacitor microphone system is designed to improve the performance of the mechanical to electrical energy conversion with force as a mechanical input and voltage as an electrical output. The open loop response of the system shows that the output signal need to be improved. NARMA-L2 and MPC controllers are used to improve the performance of the system. Comparisons of the capacitor microphone system with NARMA-L2 and MPC controllers has been done to track a step and random desired voltage input signals. The simulation result of the step input signal shows that the capacitor microphone system with NARMA-L2 controller improves the performance of the system by minimizing the percentage overshoot while for the random signal the capacitor microphone system with NARMA-L2 controller improves the performance of the system by minimizing the percentage overshoot with an exact steady state value while the capacitor microphone system with MPC controller losses its performance in tracking the steady state value after 2 sec. Finally, the comparative simulation

proved that the capacitor microphone system with NARMA-L2 controller improved the performance of the system.

REFERENCES

01. Sedaghat, S.B. and B.A. Ganji, 2020. Design and modeling of a highly sensitive microelectromechanical system capacitive microphone. *J. Micro/Nanolithog. MEMS MOEMS.*, Vol. 19, No. 2. 10.1117/1.JMM.19.2.025001
02. Urbansky, L. and U. Zolzer, 2020. A high-quality digital radio-frequency capacitor microphone with improved dynamic range. *J. Acoust. Soc. Am.*, 147: 1953-1965.
03. Shah, M.A., I.A. Shah, D.G. Lee and S. Hur, 2019. Design approaches of MEMS microphones for enhanced performance. *J. Sensors*, Vol. 2019, 10.1155/2019/9294528
04. Nicollini, G. and D. Devecchi, 2018. MEMS capacitive microphones: acoustical, electrical and hidden thermal-related issues. *IEEE. Sensors J.*, 18: 5386-5394.
05. Uchiyama, T. and T. Tomoshige, 2017. System identification of velocity mechanomyogram measured with a capacitor microphone for muscle stiffness estimation. *J. Electromyography Kinesiology*, 33: 57-63.
06. Dowlati, S., G. Rezazadeh, S. Afrang, M. Sheykhloo and A.M. Pasandi, 2016. An accurate study on capacitive microphone with circular diaphragm using a higher order elasticity theory. *Latin Am. J. Solids Struct.*, 13: 590-609.